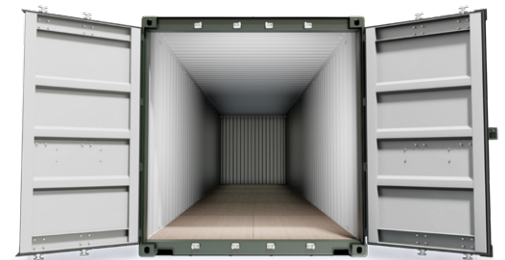


Your choice for low cost **new & used shipping containers** and site accommodation to the trade and public.



## UNIVERSAL 40ft ONE TRIP CONTAINERS

- ✓ **New - Used For One Trip**
- ✓ **Corten Steel Construction**
- ✓ **Double End Doors**
- ✓ **Forklift Pockets**
- ✓ **28mm Marine Plywood Floor**
- ✓ **Multiple Air Vents**
- ✓ **Equipped with A High Security Lock Box**
- ✓ **Corrosion Resistant Marine Grade Paint**



Our new 40ft shipping containers arrive in the UK after a single cargo trip following manufacture. This is the most common type of "new" containers in the UK and far cheaper than domestic manufacturers.

Offering great long term value one trip containers are available in RAL5010 Gentian Blue, RAL5013 Cobalt Blue, RAL6005 Moss Green or RAL6007 Bottle Green. We also have the facility to re-spray in various colours of your choice.

For added security against vandals/intruders, these containers come with factory fitted lock boxes. Being produced using Corten steel, these containers are corrosion resistant. These containers as with all other sizes available can be used for domestic storage, Commercial storage or they can be converted for a variety of bespoke uses.

### OPTIONAL EXTRAS:

- Certified Electrical Installation
- Racking or Shelving
- Condensation Prevention Treatment
- Insulation and Lining
- Security Padlock (3 keys)
- If It's Not Listed, Just Ask!

### STANDARD DIMENSIONS

Size	Full Dimensions	Capacity	Door Openings		Internal Dimensions		
			Width	Height	Length	Width	Height
40ft GP	40ft x 8ft x 8ft 6"	2,390 ft <sup>3</sup>	7ft 8"	7ft 5"	39ft 5"	7ft 8"	7ft 10"
Metric Conversion:		67 m <sup>3</sup>	2,339	2,274	12,035	2,350	2,393

**WHAT ARE YOUR STORAGE NEEDS?**  
**CALL US TODAY**  
**0161 775 3217**